

RISE IN RISK TO TRAVELLERS

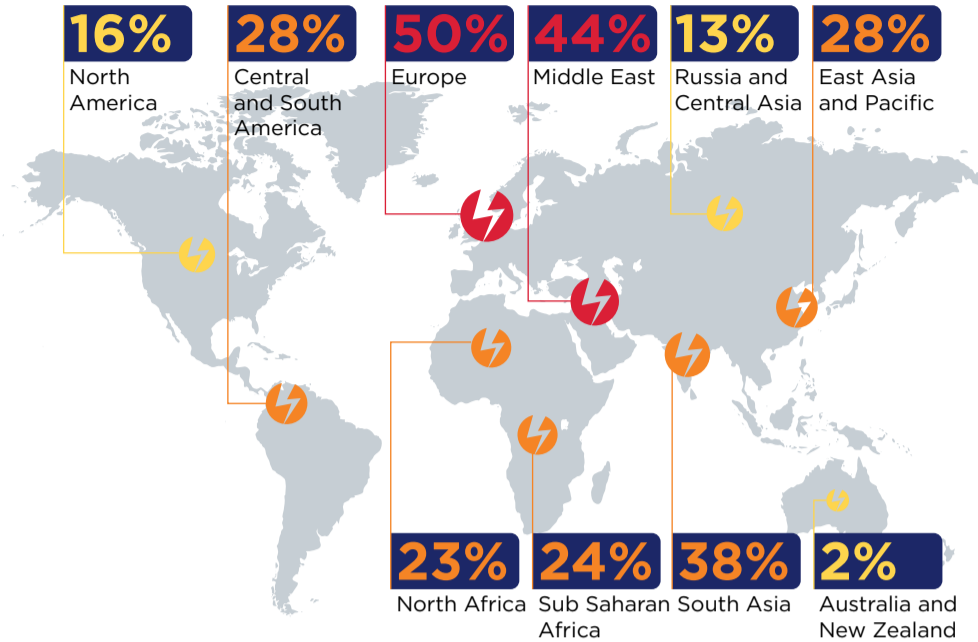
72%

say travel risks have increased over the past year

Those in Europe and North America most likely to say this

57%

expect travel risks to increase in 2017



...say risks have increased for travellers to this region

80%

say their business has modified itineraries due to health or travel security concerns

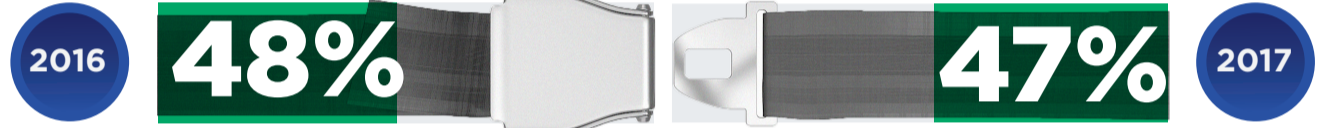


51%	36%	31%
due to terrorism	due to country risk ratings	due to civil unrest

BUT BUSINESS TRAVEL CONTINUES TO RISE

44%

say number of travellers at their business have increased

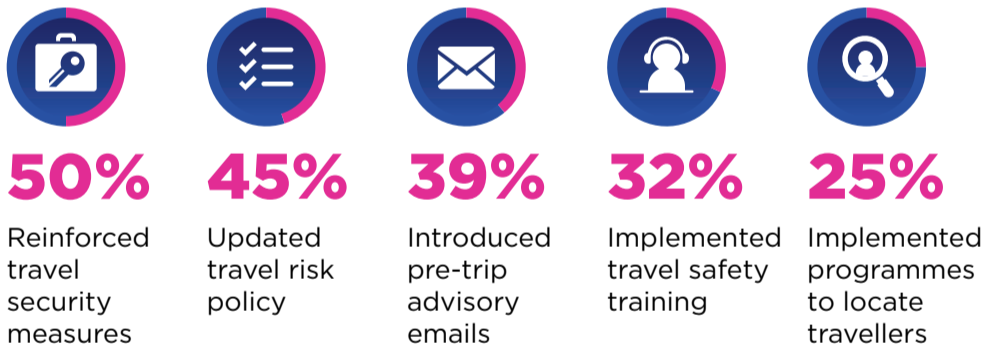


report increased investment in travel risk mitigation over the past year

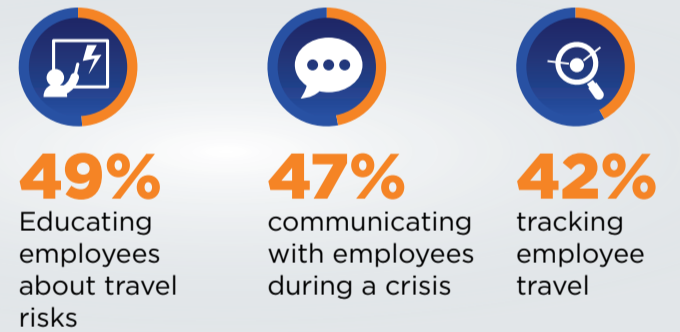
expect investment to increase in the coming year

THE CHALLENGES OF PROTECTING PEOPLE

Top 5 responses from businesses (% 'have done this'):



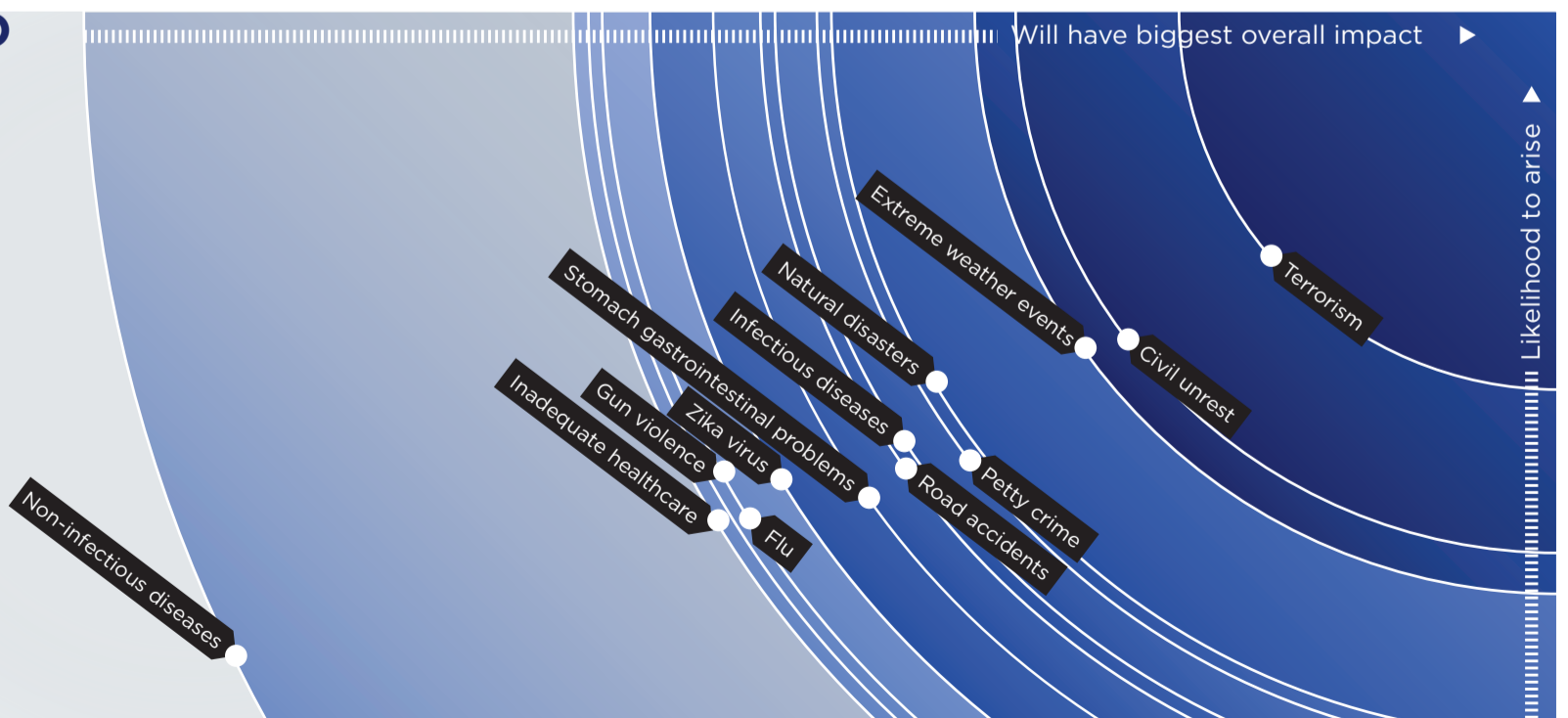
Seen as the biggest challenges to protecting travellers faced by organisations:



RISKS FORECAST TO RISE IN 2017

“Events of 2016 have resulted in a sense of increasing challenges to travel in places once thought secure. While risks are changing, organisations must ensure their actions to mitigate those changes are proportionate, and based on reality not perception.”

Rob Walker
Head of Information and Analysis at International SOS and Control Risks



In October 2016, Ipsos MORI conducted a global survey targeted to those who organise, influence, or are responsible for, their organisation's travel and risk mitigation policies. This survey findings represent responses from 1,119 people in 75 countries.